

# ALPHATEC

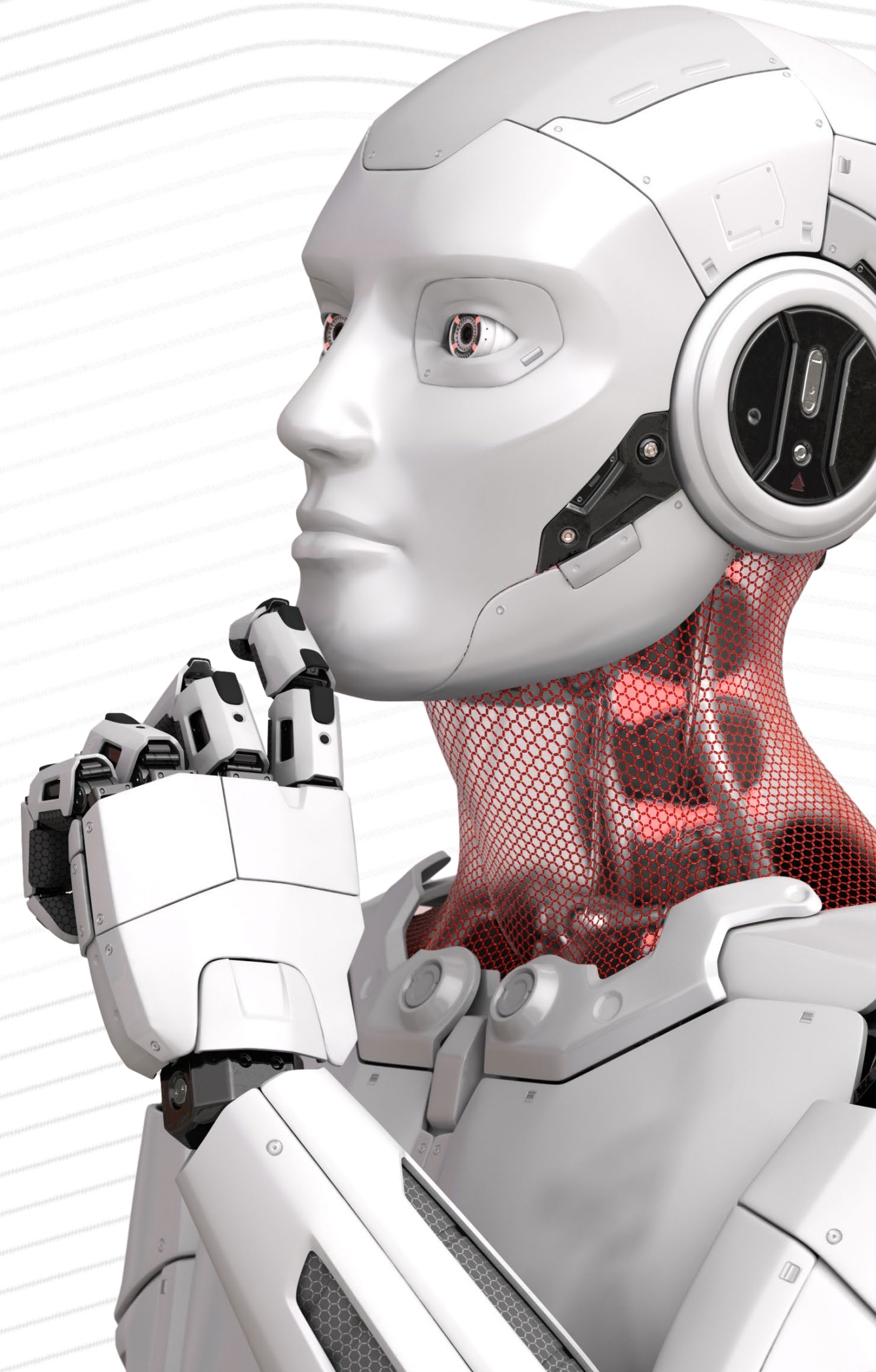
Progress arises from change!  
You simply have to want it.

Investor presentation June 2025



**Dr. Thomas Krause (CEO)**

Kassbergstrasse 39 09112 Chemnitz / Germany





# ALPHA COMPLIANCE HUB

A pioneering solution for managing global approval processes.

AI-powered webapplication that can quickly identify technical compliance requirements, which saves time and resources.

Innovative solutions for global certification and conformity assessment.

[thomas.krause@alpha-consulting.eu](mailto:thomas.krause@alpha-consulting.eu)

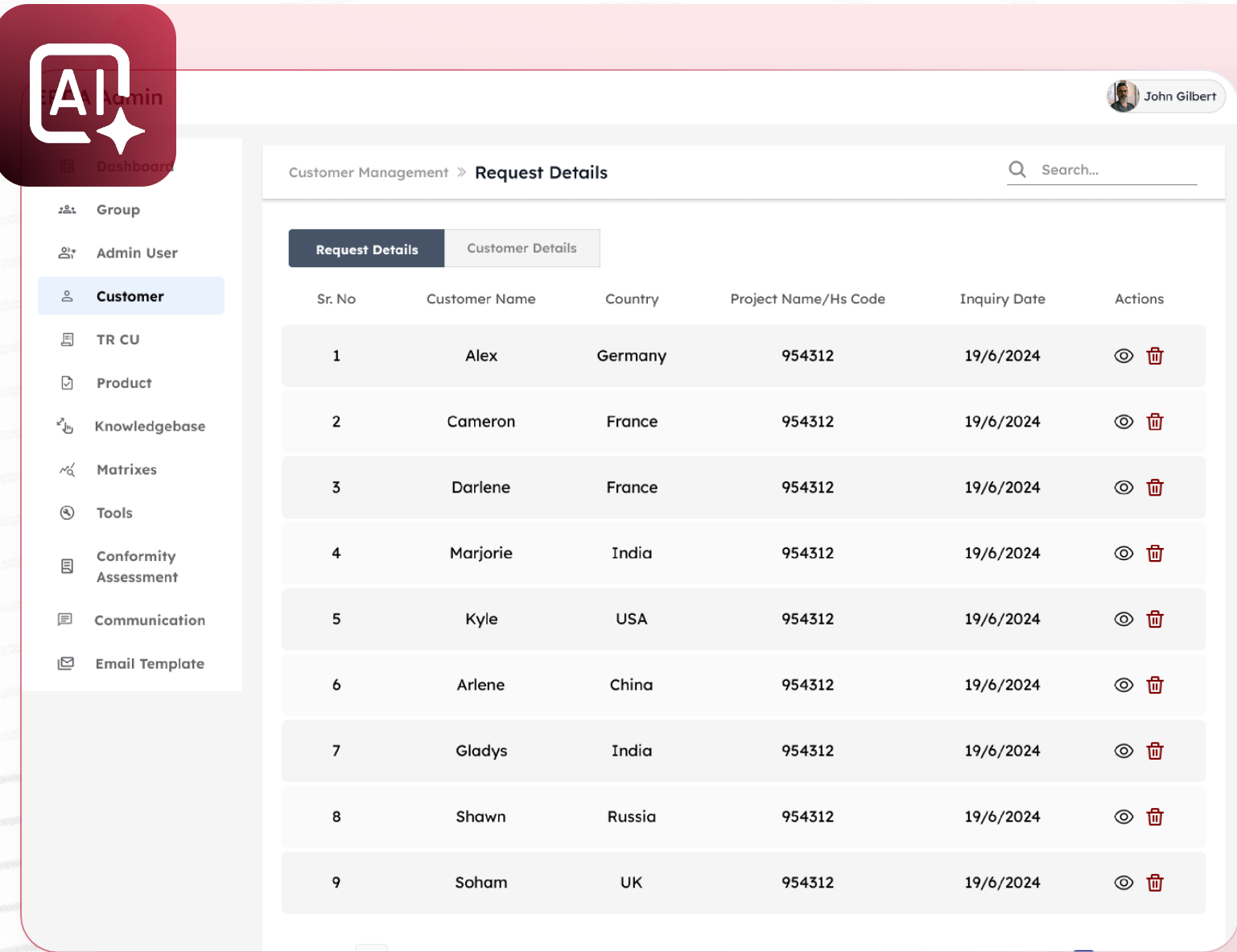
**Dr. Thomas Krause (CEO)**

CEO AlphaTec GmbH

Kassbergstrasse 39, 09112 Chemnitz



# Introduction



This presentation introduces ALPHA COMPLIANCE HUB cutting-edge AI web application designed to enhance conformity assessment and certification processes on a global scale. We will explore the core functionalities and advantages of AI technology in facilitating efficient technical compliance management.

A process that costs companies thousands of dollars using normal consultancy or internal processes. Now, you can do business everywhere with low certification costs. With ALPHA COMPLIANCE HUB, you save time and money.

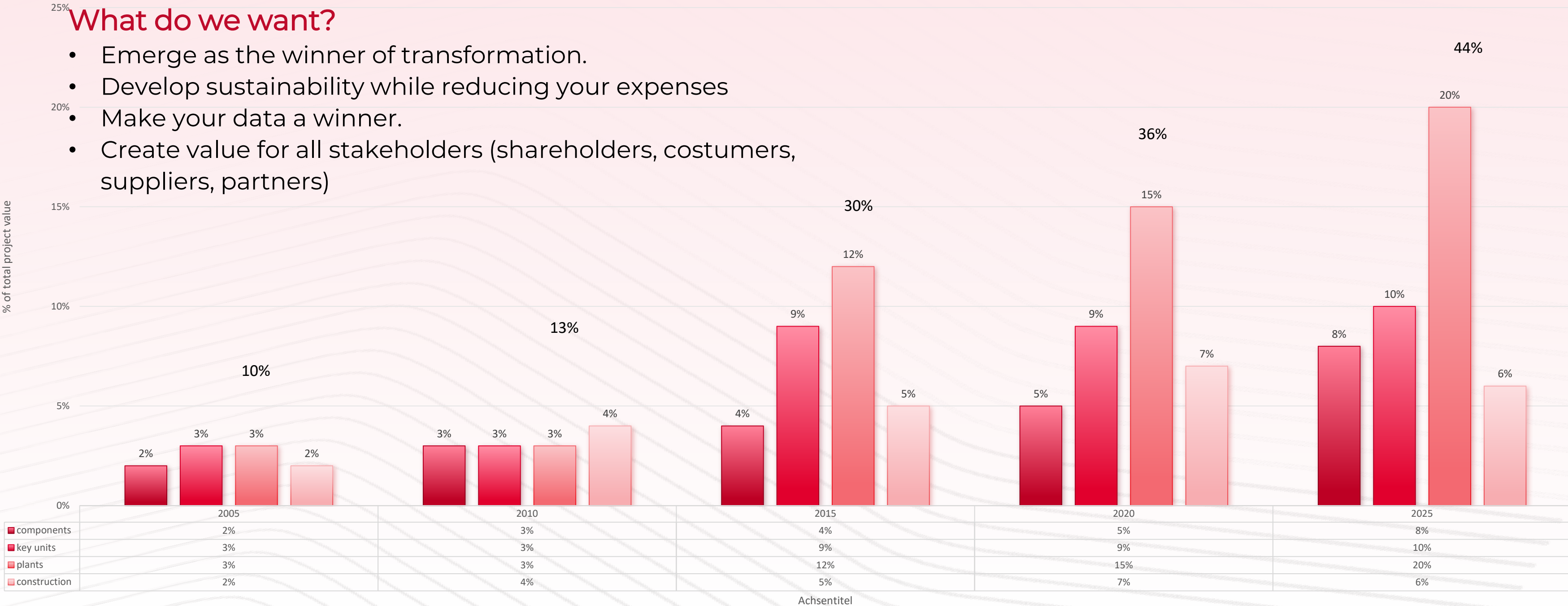
Think quality!



# Changing Economic Environment

Diagram: estimated certification and approval costs for process industry in total of the value

Estimated certification and approval costs for process industry in total of the budget value



Sources: Surveys conducted by the German Committee on Eastern European Economic Relations, ALPHA customer surveys, surveys conducted by the Federation of German Industries (BDI)

# Key features of the web application

Our unique web application includes features such as real-time compliance monitoring, automated documentation generation, audit trail capabilities, and customizable reporting tools. It also offers integration with existing enterprise systems and provides a user-friendly interface to enhance user engagement and experience.

Our web application contains on 3 main levels:

1

Compliance Wizard

2

Knowledge Level with global  
quality infrastructure and  
certification database

3

Predictive management Level  
with managing of conformity  
documents and automated  
feedback system

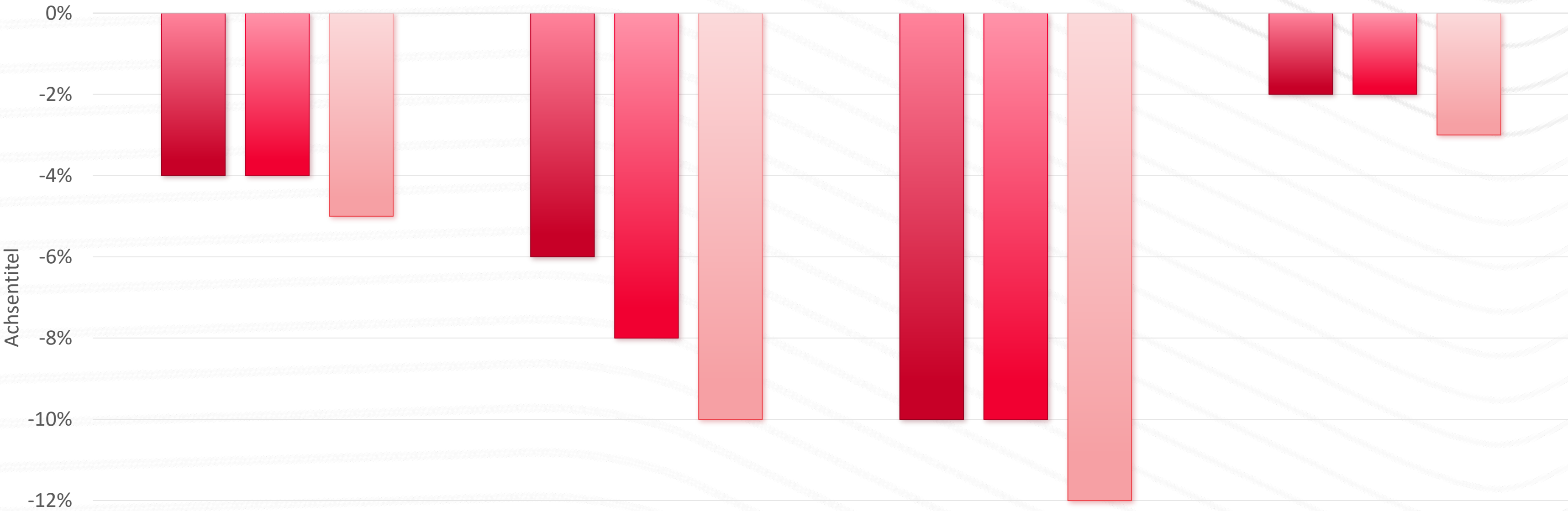


# Strengthening operational performance.

Optimization of the cost structure through AI-based automation of your data, tailored knowledge transfer, automatic third-party approval management, and reissuing of your certificates and approvals.

Annual costs saving target with Alpha Compliance Hub				
	2025	2026	2027	2028
Components	-4%	-4%	-5%	-6%
Key units	-6%	-8%	-10%	-10%
Plants	-10%	-10%	-12%	-12%
Construction	-2%	-2%	-3%	-3%

# Annual costs saving target with Alpha Compliance Hub



	Components	Key units	Plants	Construction
2025	-4%	-6%	-10%	-2%
2026	-4%	-8%	-10%	-2%
2027	-5%	-10%	-12%	-3%



# Key features of the web application

Our unique web application includes features such as real-time compliance monitoring, automated documentation generation, audit trail capabilities, and customizable reporting tools. It also offers integration with existing enterprise systems and provides a user-friendly interface to enhance user engagement and experience.

## OUR MISSION FOR YOU

- 1 Helping our clients to meet the highest standards of regulatory compliance and technical regulation.
- 2 Enabling businesses to confidently navigate through the documentation monitoring and technical compliance.
- 3 Using AI to identify certification requirements and transforming it to certification work
- 4 Making your global certification process faster, more accurate and efficient.
- 5 Improving your certificate management while maximizing efficiency in terms of cost and time



Benefits of using

# ALPHA COMPLIANCE HUB for certification processes



## AI Integration

into certification processes offers numerous benefits including increased accuracy, efficiency, and speed.



## Automate Routine Task

AI can automate routine tasks such as data entry, documentation checks, and analysis, significantly reducing the time taken to achieve compliance.



## AI-driven insights

improve decision-making by helping organizations spot risks and non-conformities early, minimizing disruptions and reducing compliance-related costs.



# ALPHA COMPLIANCE HUB

consists of 3 business models:

**1** Booking of automated country databases via Visa card/invoice at a professional B2B classification level

**2** Credit points for individual questions at the knowledge transfer level

**3** Automatic recertification at the predictive management level



Please contact us to discuss potential opportunities for cooperation, investment, and collaboration. Become part of progress and benefit from change in the world of work.

---

**Dr. Thomas Krause (CEO)**

AlphaTec GmbH

Kassbergstrasse 39

09112 Chemnitz / Germany

Tax No 215/105/00188

HRB 369995

Tax ID DE 140856997

[thomas.krause@alpha-consulting.eu](mailto:thomas.krause@alpha-consulting.eu)

+49151 418 36 582